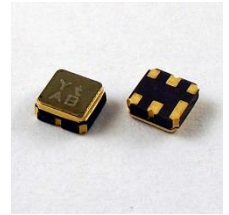


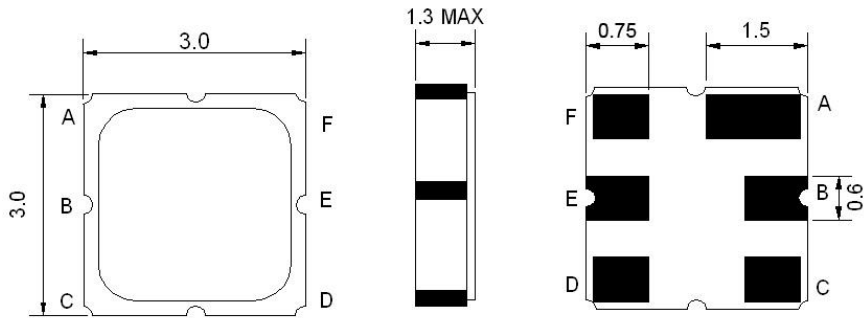
- Low-loss RF filter for mobile systems
- Low amplitude ripple
- No matching network required for operation at 50Ω
- Ceramic package for Surface Mounted Technology (SMT)
- Lead-free production and RoHS compliant



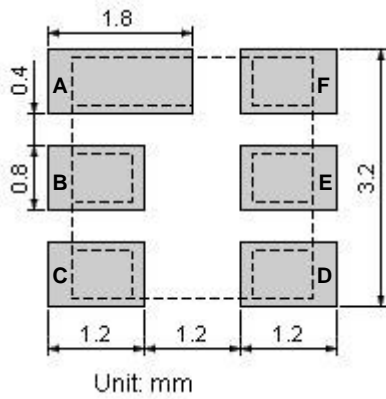
MAXIMUM RATING				
PARAMETERS DESCRIPTION	UNIT	MINIMUM	TYPICAL	MAXIMUM
Operating Temperature Range	°C	-40	-	+85
Storage Temperature Range	°C	-40	-	+85
Maximum DC Voltage	V	-	-	0
Maximum Input Power	dBm	-	-	12
Source Impedance	Ω	-	50	-
Load Impedance	Ω	-	50	-
Length x Width	mm ²	-	3.0 x 3.0	-
Height	mm	-	-	1.3

ELECTRICAL SPECIFICATION				
PARAMETERS DESCRIPTION	UNIT	MINIMUM	TYPICAL	MAXIMUM
Center Frequency (Fo)	MHz	-	921.5	-
Insertion Loss within 918.0 ~ 925.0 MHz	dB	-	3.0	5.0
Amplitude Ripple (p-p) within 918.0 ~ 925.0 MHz	dB	-	1.0	2.5
Absolute Attenuation:				
0.300 ~ 898.00 MHz	dB	35	42	
898.00 ~ 908.00 MHz	dB	30	38	
935.0 ~ 945.00 MHz	dB	20	40	
945.0 ~ 1500.00 MHz	dB	35	38	
1500.0 ~ 2200.00 MHz	dB	30	32	
2200.0 ~ 3000.00 MHz	dB	25	27	
Input VSWR within 918.0 ~ 925.0 MHz			1.5:1	2.0:1
Output VSWR within 918.0 ~ 925.0 MHz			1.5:1	2.0:1

Package Dimensions

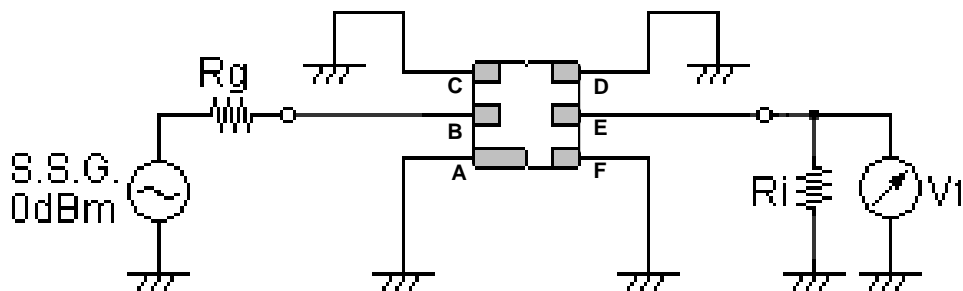


SOLDER PATTERN



Pin Description	
A, C, D, F	Ground
B	Input
E	Output

Testing Environment



Source Impedance: 50 Ω

Load Impedance: 50 Ω

Frequency Characteristics

Frequency Response

